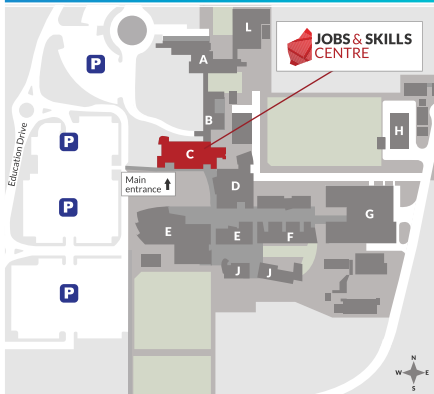


Connecting training and industry in the Peel

WORDS & IMAGES | South Metropolitan TAFE

About SM TAFE Mandurah

- Strategically important regional campus to service the Peel region
- Multi-industry campus offering with strong focus on pre-apprenticeship and pathway qualifications
- Co-located with John Tonkin College and Murdoch University
- Home to a Jobs and Skills Centre



South Metropolitan TAFE (SM TAFE) is tailoring its training to meet the current needs of the Peel community and industry.

SM TAFE provides training for students of all ages, while offering specialised training for Aboriginal and culturally diverse groups at its Mandurah campus.

Peel's population is growing rapidly yet unemployment remains an issue. SM TAFE has responded by adapting training and employment pathways for Peel job seekers.

An example of this is SM TAFE's pre-apprenticeship programs where students do work placement in priority Peel industries to connect them with employers, shorten the term of a subsequent apprenticeship and potentially lead to offers of employment.

SM TAFE is also helping mature-aged students build their confidence in a variety of online and computer-based resources. The college also delivers a range of access and bridging training



programs specifically designed to help mature aged students transition into work and study.

English courses are offered to assist people from culturally diverse backgrounds to transition into further study and employment. There are also bilingual classes to support people with low literacy and numeracy levels.

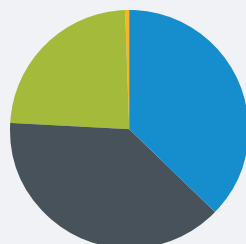
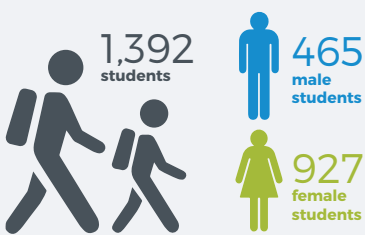
During October 2018, the Peel Jobs and Skills Centre (JSC) opened at SM TAFE's Mandurah campus in partnership with Bridging the Gap and SMYL Community Services.

The Peel JSC provides free professional and practical advice on training and employment opportunities, career advice, apprenticeship and traineeship information, and specialist services for Aboriginal jobseekers.

Manager of the Peel JSC Melinda Blagaich said the aim is to meet the region's unique local needs, with a particular focus on addressing the area's high youth unemployment rate, working closely with school leavers, youth at risk, sole parents, employers and industry.

"The key to working in Peel is collaborating with all service providers and being aware of what is happening to identify any gaps, and form strong

Mandurah Campus



Student age range

- 15-19 years (520)
- 20-34 years (539)
- 35-64 years (326)
- 65 and over (7)



Strong working relationships
with key stakeholders is vital.



working relationships with key stakeholders to identify where we can add value," she said.

"We currently partner with the Peel Development Commission to collaborate with regional Aboriginal employers, inviting them to be on an employer register for the Peel Business Park."

The JSC also provides support services to employers and businesses to assist with recruitment, advertising, workforce development, training solutions and resources and advice on Aboriginal recruitment and retention.

"We have connected with the Peel jobactive network to increase Aboriginal engagement and employment, and training for young and mature-age clients.

"Job seekers benefit from our resume and interview workshops and our one-on-one resume and job application sessions we run at locations across the region."

The Peel JSC has established partnerships with the Peel regional shires to offer outreach services at their Community Resource Centres and at the GP Down South HUB in Pinjarra, as a way for the JSC to connect with the community and provide them with free support and services.

"These partnerships have resulted in many jobseekers re-engaging and obtaining sustainable training and employment outcomes."

Through the continual growth of training and employment services, community partnerships and industry collaboration, SM TAFE continues to adapt to meet the needs of the Peel community.

MORE INFORMATION

Peel Jobs and Skills Centre call 13 64 64 or visit www.jobsandskills.wa.gov.au

South Metropolitan TAFE call 1800 001 001 or visit www.southmetrotafe.wa.edu.au



BRIDGING the GAP