


Thriving Futures

CAREER CHOICES
THAT ENRICH
CHILDREN'S LIVES

Proud Partners

BHP





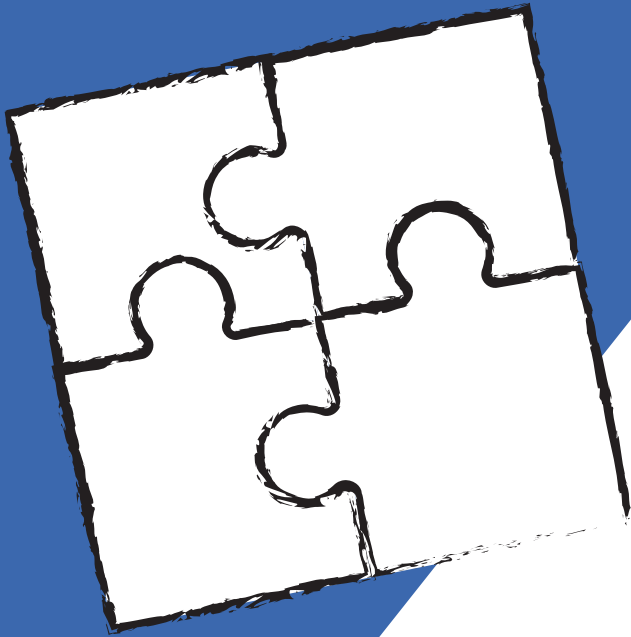
THERE'S A THRIVING
FUTURE RIGHT HERE
FOR YOU IN
EARLY LEARNING...

THRIVING FUTURES IS NURTURING
COMMUNITIES WITHIN THE PILBARA TO
SHAPE THE FUTURE FOR GENERATIONS
TO COME >>

Our early learning workforce development program is committed to supporting communities where children can reach their full potential with access to high quality early learning.



***Support that begins with training, recruiting
and retaining a quality, sustainable
early learning workforce***



THRIVING FUTURES WILL WORK COLLABORATIVELY WITH THE PILBARA COMMUNITY TO >>



Increase the number of qualified early education & care educators in the region who have career development pathways.



Increase the number of people seeking to establish a career within early learning services.



Develop a co-ordinated approach to continuing professional development.



Improve business practices, workplace relationships, and the stability of the workforce.



Increase the number of children engaged in high quality early learning.


FOR QUALIFIED EARLY LEARNING EDUCATORS & LEADERS >>

We're creating more training opportunities for furthering your professional career and your positive impact on the lives of others.

Have a Cert III in Early Childhood Education & Care?
We can cover the costs for you to get your Diploma through our **Scholarship Program***!

Plus, we'll be there to support you every step of the way with our unique Mentoring Program.

* Minimum criteria to be met



ALL THE GREAT REASONS YOU STARTED A CAREER IN EARLY LEARNING, WITH ALL THE BEST OPPORTUNITIES FOR YOU TO ADVANCE AND GROW...

FOR SCHOOL LEAVERS OR THOSE SEEKING A NEW CAREER >>


When you start a career as an early childhood educator with Thriving Futures, we'll **support and guide you through every step of your journey**, building the foundations for your long-term career in early education & care.

You'll see the positive difference you can make to every child's emotional well-being, right from the **very first steps they take with you** in early learning, to school and beyond.

Fully-Funded Scholarships* available in Cert. III or Diploma in Early Childhood Education & Care.

We'll even give you guidance to prepare your CV and support to navigate the job application process. You may even earn an income whilst working in an early learning centre!

Plus, we'll be there to support you every step of the way with our professional **Mentoring Program**.



SUPPORTING
EVERY STEP YOU
TAKE ON A
REWARDING EARLY
CHILDHOOD CAREER
PATH...

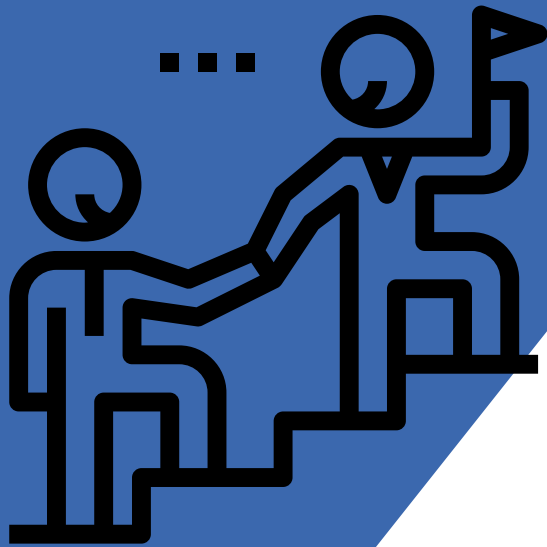
AND FOR PILBARA EARLY LEARNING CENTRES >>

We'll find you the right candidates that will help improve the quality and stability of your early learning workforce and increase your business' capacity.

We'll also work with you to introduce and encourage our Mentoring Program for your newly-placed employees so they're supported and remain with your service long-term.



BETTER FUTURES
FOR CHILDREN,
BETTER
OPPORTUNITIES FOR
SERVICES...



OUR UNIQUE MENTORING PROGRAM WILL SUPPORT YOU EVERY STEP OF THE WAY >>

For newly-placed employees >>

✓ Under the Thriving Futures program, we'll advance your professional growth and development, with one-on-one mentoring and guidance with our Professional Mentor specifically matched to your journey in early education and care.

For services >>

✓ We'll ensure your newly-placed employee's wellbeing and professional needs are fully supported to maintain good relationships with the children, families and fellow educators within your service.

We'll also work with you to identify an internal mentor for your new employee to further guide their ongoing professional development and support needs.

WANT TO KNOW
MORE? OUR TEAM @
THRIVING FUTURES
WOULD LOVE TO
CHAT...

CONNECT WITH US

Find out more >>


 thrivingfutures.org.au

Follow us >>

 [/thrivingfutures.org.au](https://www.facebook.com/thrivingfutures.org.au)

 [@thrivingfutures](https://www.instagram.com/thrivingfutures)

Get in touch >>

 1300 66 11 64

 support@thrivingfutures.org.au

Thriving Futures

OUR SUPPORTERS >>

BHP



NEWMAN
FUTURES

 HEDLAND
COLLECTIVE

CLAYTON UTZ

The logo features the word "Thriving" in a cursive font with a rainbow gradient from red to green, and "Futures" in a bold, dark grey sans-serif font below it. A horizontal bar at the bottom of the page is divided into three colored segments: green, pink, and blue.

Thriving
Futures

thrivingfutures.org.au